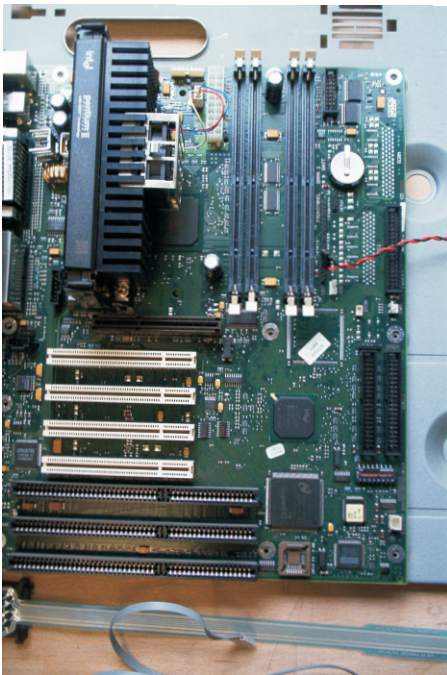


➤ Quality assurance for used PCs

With quality standards for used hardware improve the verifiability and the safety for the purchaser



ReUse-Computer as a registered trade mark

- Helps to make quality verifiable
- Increases consumer safety and the acceptability of used computer hardware
- Promotes further use and re-use
- Reduces environmental impact and conserves resources
- Documents sustainable operations

The members of ReUse-Computer Society

- Develop and test standard quality assurance procedures
- Carry out public relations work and provide customer advice
- Promote the Re-Use idea for private and business applications, in administrations, and in social institutions

ReUse-appliances satisfy the quality criteria developed in cooperation with interested members of the public, non-profit organisations and computer dealers.

ReUse-appliances have a serial number which is stored in a nationwide database for service purposes.

ReUse-appliances are supplied to the customer with test records.

ReUse-appliances are cleaned inside and out, and are made available to the customer in an attractive condition.

ReUse-appliances have technical parameters which mean they can be used for many applications in the place of new equipment.

ReUse-appliances reduce investment requirements without restricting performance; and they are a sign of modern, environmentally-aware economic attitudes



1. Requirements

- Fully functional
- PCs have passed the ToolStar®Test "ReUse Test" and the operating system test start
- Completely cleaned
- ReUse serial number given and test log registered

2. Exclusion criteria

- Impaired functionality
- Breaks and cracks in the housing
- Broken lugs or catches on the housing, cladding, or covers (e.g. flaps over operating elements)
- Cables torn-out of plugs or the housing
- Odour development in power components (e.g. in the power unit)
- Severe corrosion, e.g. rust, oxidation
- Defective insulation on connection leads
- Defective fixing elements (e.g. switches, stripped screws, bent end plates on add-in cards, etc.)
- Damaged operating elements
- Unusual noises with printers and drives (hard disk, floppy drive, etc.)

3. Criteria for all appliances

Class A	Class B
<ul style="list-style-type: none"> • Quiet or low-noise fan • No or minimal scratches on the housing • No surface coating damage • No dents or other deformations (e.g. skewed housing) • No or very slight discoloration (e.g. on the fan grill) 	<ul style="list-style-type: none"> • Louder fan, but no squeaking • Scratching but no corrosion • Slight surface coating damage but no corrosion • Slight dents or deformations which do not affect the functionality • Discoloration (provided this is not an indication of defects)

4. Criteria for printers and monitors

Printers	Monitors
<ul style="list-style-type: none"> • Functional paper intake • Functional printer head, good printing quality 	<ul style="list-style-type: none"> • Ergonomic quality – at least TCO 95 • Good image quality

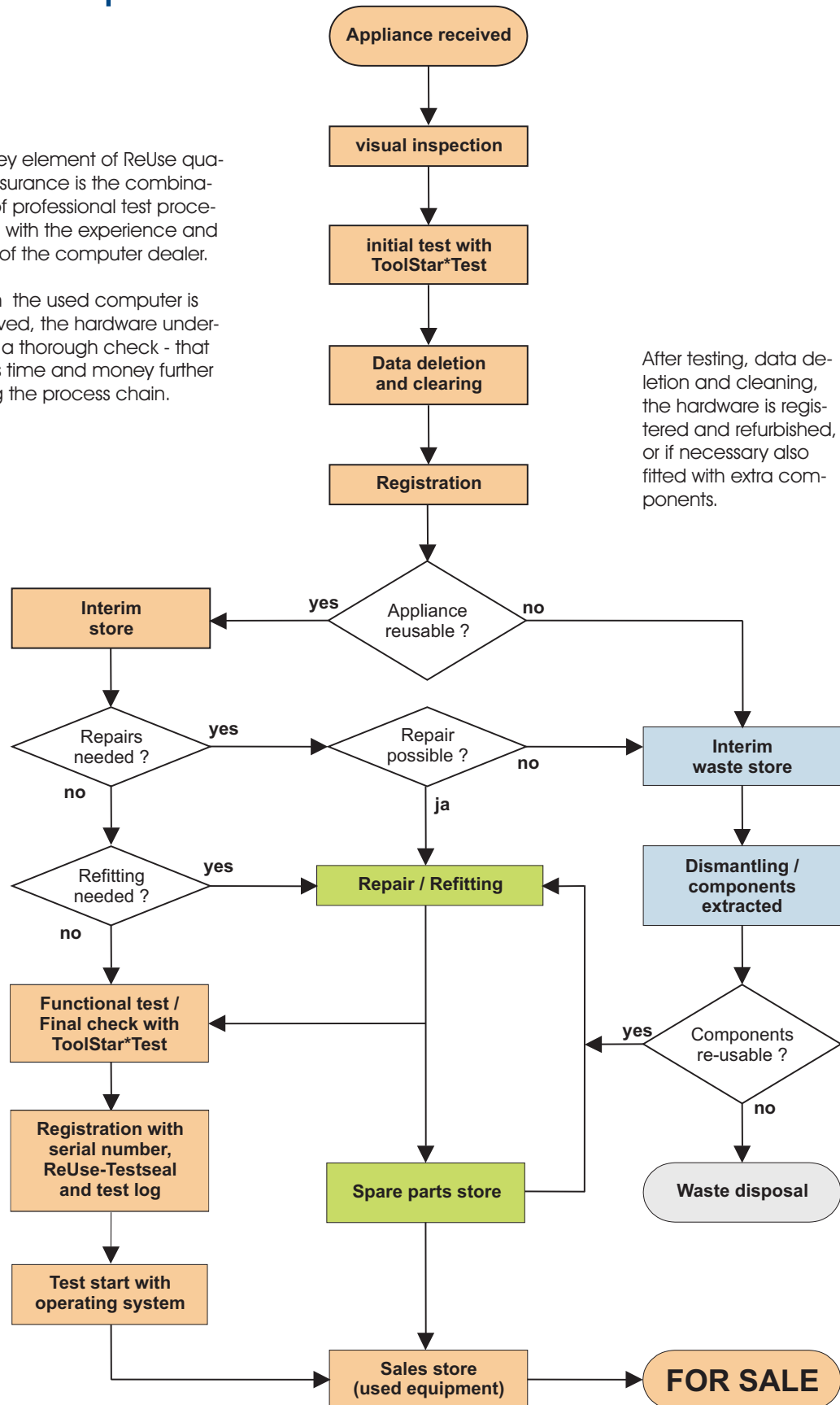
➤ Quality assurance for used PCs

With quality standards for used hardware improve the verifiability and the safety for the purchaser

The key element of ReUse quality assurance is the combination of professional test procedures with the experience and care of the computer dealer.

When the used computer is received, the hardware undergoes a thorough check - that saves time and money further along the process chain.

After testing, data deletion and cleaning, the hardware is registered and refurbished, or if necessary also fitted with extra components.



Test log and serial number belong to the ReUse hardware.

The technical data is stored in a nationwide support database.